

# The Newest GreenGrid® Modular Vegetative Green Roof System



**GreenGrid®**  
*Engineered to Perform  
Designed to Inspire* **ROOFS**

## The 5th Generation GreenGrid® Module Launches 2021

These new zero-edged modules are an improvement to the previous generation of GreenGrid®, maintaining the functionality of the original modular green roof system, but adding improved structural design, multiple depth configurations, connectivity, and excellent stormwater retention.

Unlike hybrid /subterranean modular systems and traditional layered systems, G5 modules can be easily accessed and removed to perform maintenance or repairs to the underlying roof without damaging the vegetation. Additionally, G5 modules are specifically designed to maximize stormwater control, and now allow irrigation lines directly beneath modules.

GreenGrid offers versatility and design flexibility, with modules available in FOUR different depths for a variety of planting options. Modules can be pre-grown at our nurseries to meet plant coverage specifications up to 95% and delivered to the job site to create an instant mature green roof. This translates to a successful green roof with less up-front maintenance, plus a beautiful look from day one. In addition, GreenGrid modules can be custom cut with curves or angles.

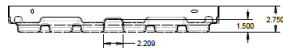


[www.GreenGridRoofs.com](http://www.GreenGridRoofs.com)

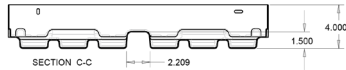


GreenGrid is a registered trademark of Weston Solutions, Inc. (WESTON). The GreenGrid® system is a proprietary technology of WESTON in the U.S. and Canada.  
U.S. patents 7,900,397 / 7,997,027 / 8,555,545  
Canadian patents 2,416,457 / 2,416,463 / 2,418,262

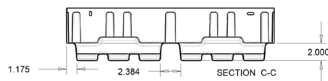
Two and 3/4 Inch Tray



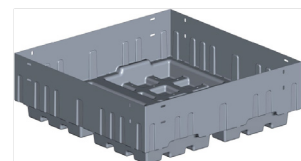
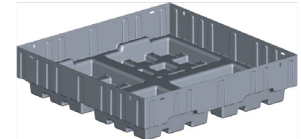
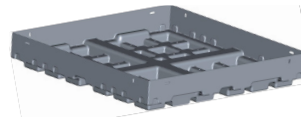
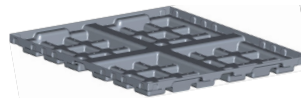
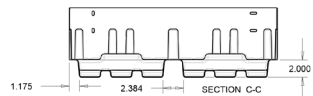
Four Inch Tray



Six Inch Tray



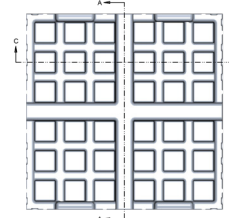
Eight Inch Tray



Pre-Vegetated 4-inch Module



Top View Four Inch Tray



GreenGrid Component	Specification Description and Notes			
G5 System Modules	Dimensions (W x L)		Depth (D)	
	Standard Units	SI Units	Standard Units	SI Units
Ultra-Extensive	24 in. x 24 in. [OD ± 1/8 in.]	60.96 cm x 60.96 cm [OD ± 0.318 cm]	2.75 in.	6.99 cm
Extensive			4.0 in.	10.16 cm
Semi-Intensive			6.0 in.	15.24 cm
Intensive			8.0 in.	20.32 cm
Weight Range	Approximate Minimum <sup>Note 1</sup>		Approximate Maximum <sup>Note1</sup>	
Ultra-Extensive	10 lbs/sf	48.82 kg/m²	15 lbs/sf	73.24 kg/m²
Extensive	20 lbs/sf	97.65 kg/m²	30 lbs/sf	146.47 kg/m²
Semi-Intensive	25 lbs/sf	122.06 kg/m²	45 lbs/sf	219.71 kg/m²
Intensive	30 lbs/sf	146.73 kg/m²	60 lbs/sf	292.95 kg/m²
Drainage Clearance	3/4 in.	1.91 cm	All size modules	
Module Material	100% pre-consumer linear low density or medium density polyethylene. Protected with UV inhibitors and stabilizers.			
Ultra-Extensive				
Extensive				
Semi-Intensive				
Intensive				
Module Color	Black [custom colors available upon request]			
Planting options	Pre-planted and grown to mature coverage. Upgrades for higher planting density, larger plants, and/or sedum mats available. Crossover (hidden module) planting option with sedum mat.			
Growing Medium	FLL-compliant extensive, semi-intensive, and intensive regional blends. Custom blends also available.			
Vegetation	Varies by depth and project location. Succulents and groundcovers typical in all module depths. Ornamental grasses and perennials for 6-in and 8-in applications. Native and other custom plantings also available.			
Typical Underlayment	As specified by waterproofing manufacturer. 6-12oz geotextile typical.			
Module Connectors	Nylon/Plastic panel fasteners or zip ties. Fastener slots pre-fabricated in module sidewalls.			
Irrigation Systems	Designed based on project-specific requirements.			

**Note 1:** All weights are presented with growing media at maximum water-holding capacity. Conservative estimates for vegetation and module weight per SF have been included in above weight ranges. Weights may vary based on requirements for project-specific vegetation selections and variations in regional materials incorporated into engineered growing media. Consult GreenGrid representative for further information.

**Local contacts are available on our Web site [www.GreenGridRoofs.com](http://www.GreenGridRoofs.com) or contact our headquarters office at 888-404-4743**